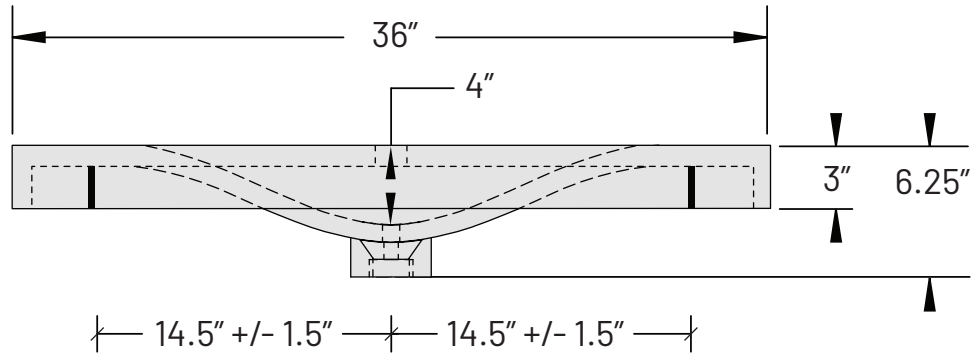
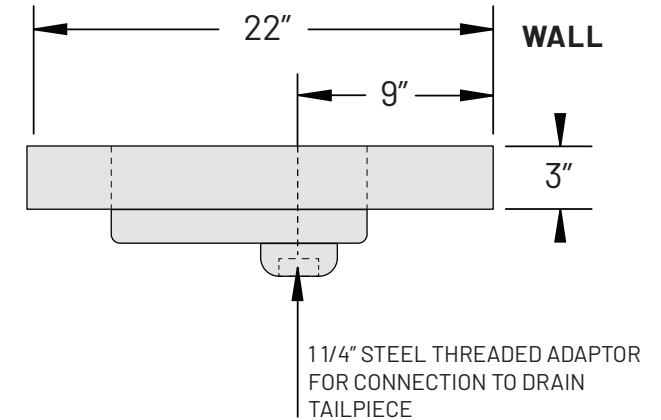


SINK SECTION VIEW

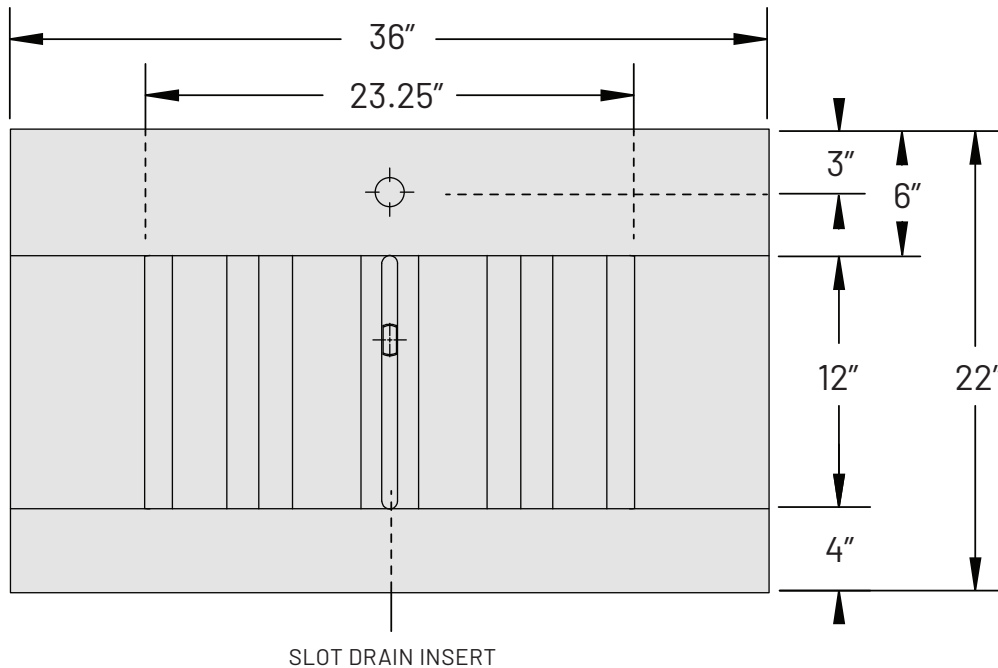


FSB-L BRACKET LOCATIONS (SEE BRACKET MOUNTING INSTRUCTIONS)

SINK SIDE VIEW



SINK PLAN VIEW



SLOT DRAIN INSERT

SPECIFICATIONS

- BASIN DIMENSIONS: 23.25" x 12" x 4"



CSA B45.8/IAPMO Z403
ASME A112.18.2/CSA B125.2



ICC A117.1

- DIMENSIONS: 36" L x 22" D x 3" H (APRON)

- CONCRETE BASIC THICKNESS IS 1"

- CONCRETE THICKNESS AT EDGE (PROFILE) IS 3"

- WEIGHT: ~60 LBS

- MOUNTS TO WALL WITH TWO STEEL BRACKETS (FSB-L)

- DECORATIVE LINEAR-STYLE DRAIN COVER INCLUDED

- MEETS ADA GUIDELINES WHEN INSTALLED CORRECTLY

STANDARD FAUCET & SOAP HOLE CONFIGURATIONS (CUSTOMIZABLE):

- 0 HOLES: WALL-MOUNT FAUCET

- 1 SINGLE FAUCET HOLE OR TRIPLE HOLE SET CENTERED ON BASIN

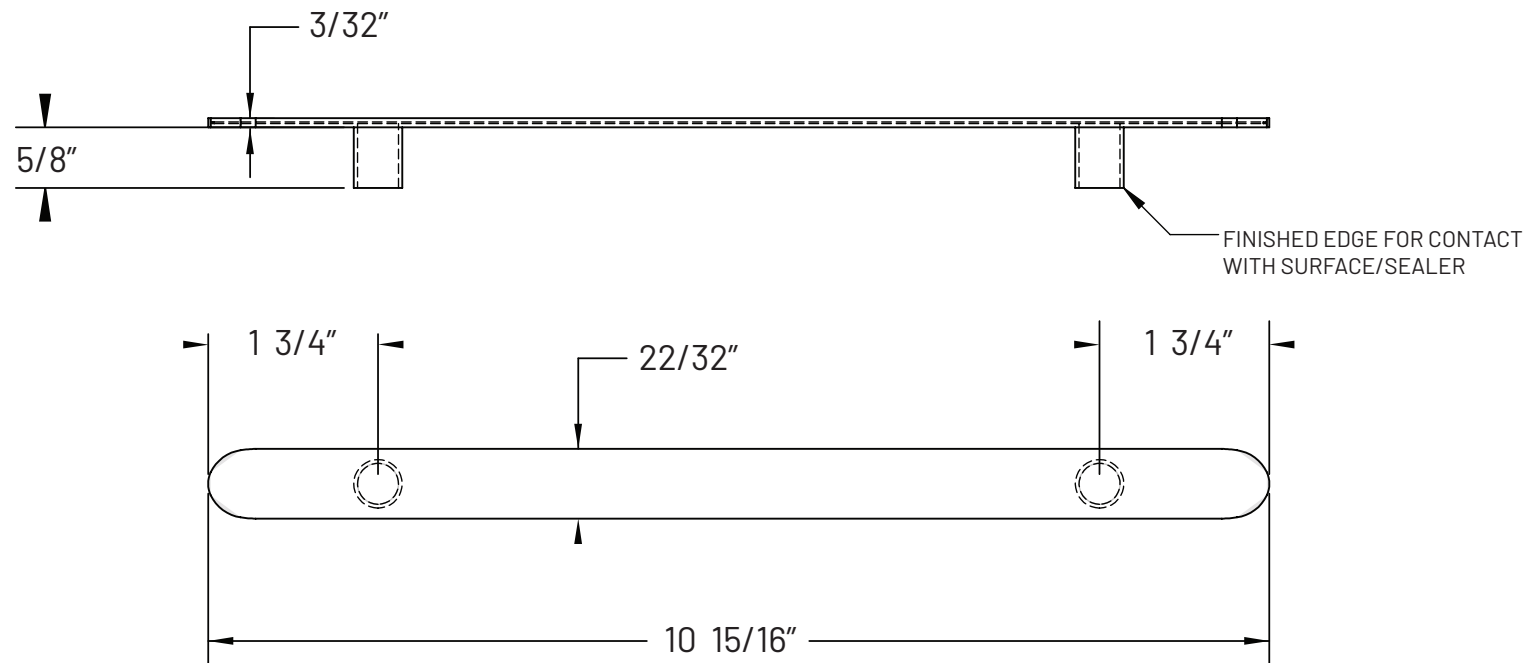
- SOAP HOLE 5" MINIMUM TO LEFT OR RIGHT OF FAUCET HOLE

- TRIPLE HOLE SET = 8" SPREAD

- HOLE DIAMETER = 1 3/8"

- HOLE(S) CENTERED 3" OFF OF BACK OF SINK BASIN

DECORATIVE SLOT DRAIN INSERT



SPECIFICATIONS

- AVAILABLE IN 3 FINISHES:
 - SD-BS: BRUSHED STAINLESS
 - SD-BL: POWDER COATED BLACK
 - SD-BR: POWDER COATED BRONZE