
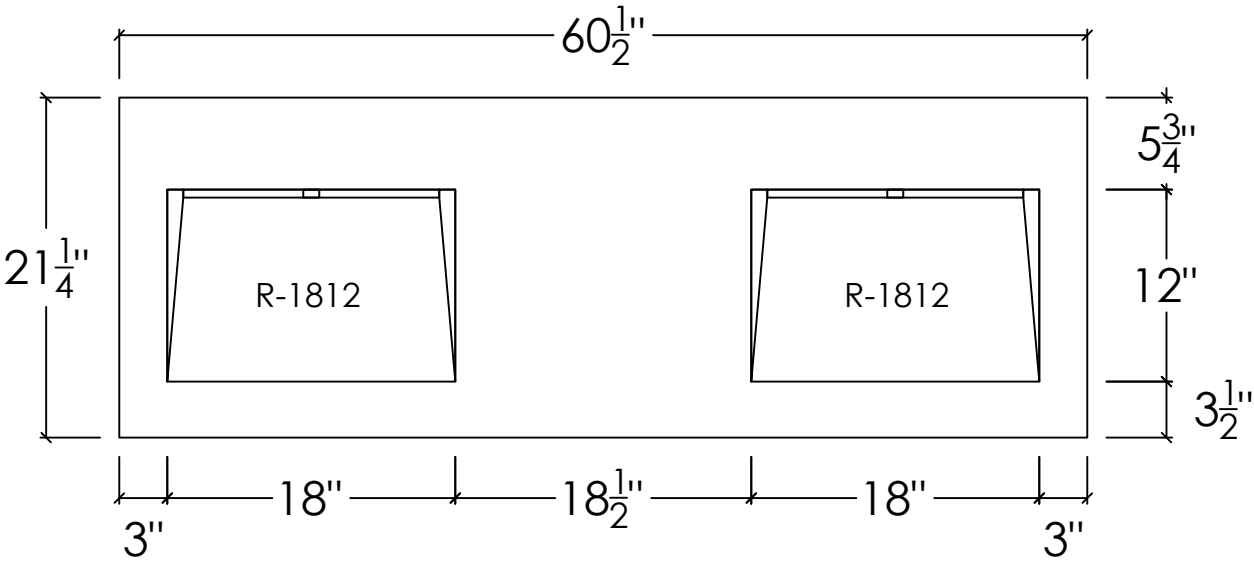
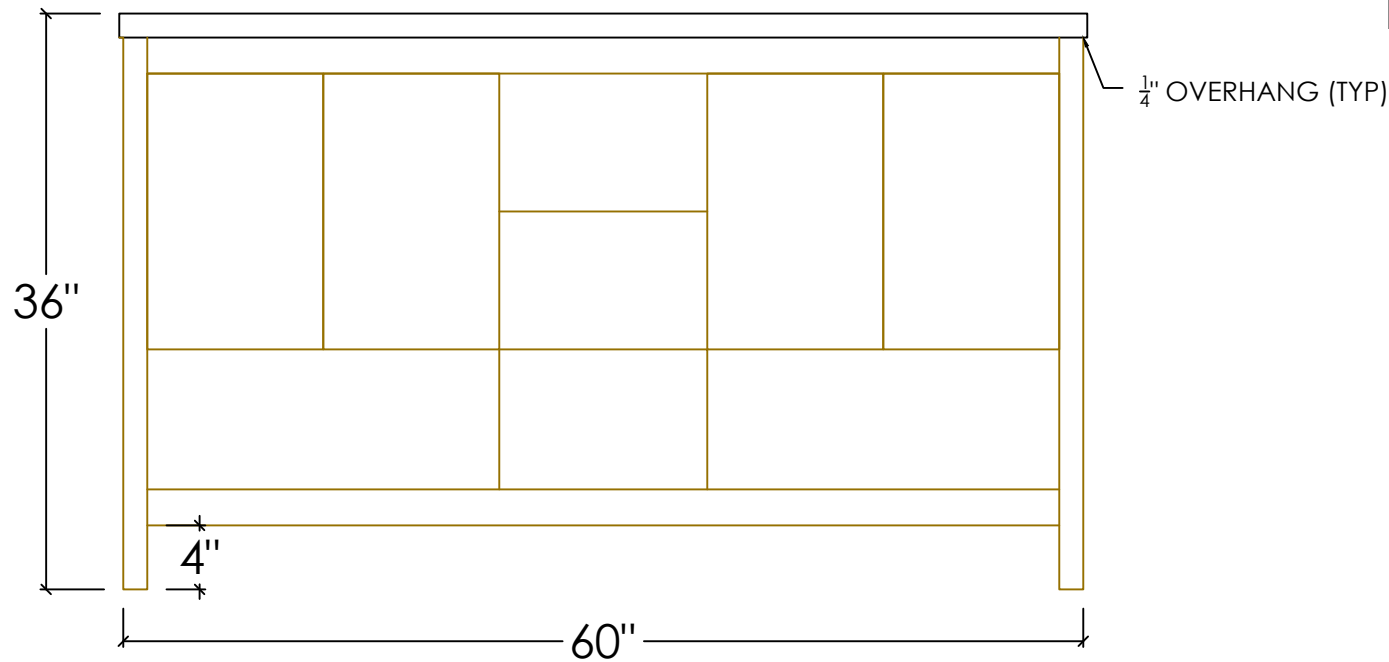


SPECIFICATIONS	
<b>SINK BASIN:</b>	
- SINK MODEL #: R-1812 = 18" x 12" x 5"      OR      RC-1812 = 18" x 12" x 5"	
- COMPLIANCE & CERTIFICATIONS:	
	CSA B45.8/IAPMO Z403 ASME A112.18.2/CSA B125.2 CODE = R-R-SL-2-2-61x21-(C)-(O)      (R-1812) RC-RC-ST-2-2-61x21-(C)-(O)      (RC-1812-S)
<b>STANDARD FAUCET &amp; SOAP HOLE CONFIGURATIONS (CUSTOMIZABLE):</b>	
- 0 HOLES - WALL-MOUNT FAUCET	
- 1 SINGLE FAUCET HOLE OR TRIPLE HOLE SET CENTERED ON SINK BASIN	
- TRIPLE HOLE SET = 8" SPREAD	
- HOLE DIAMETER = 1 3/8"	
- HOLE(S) CENTERED 2 1/4" OFF OF BACK OF SINK BASIN	

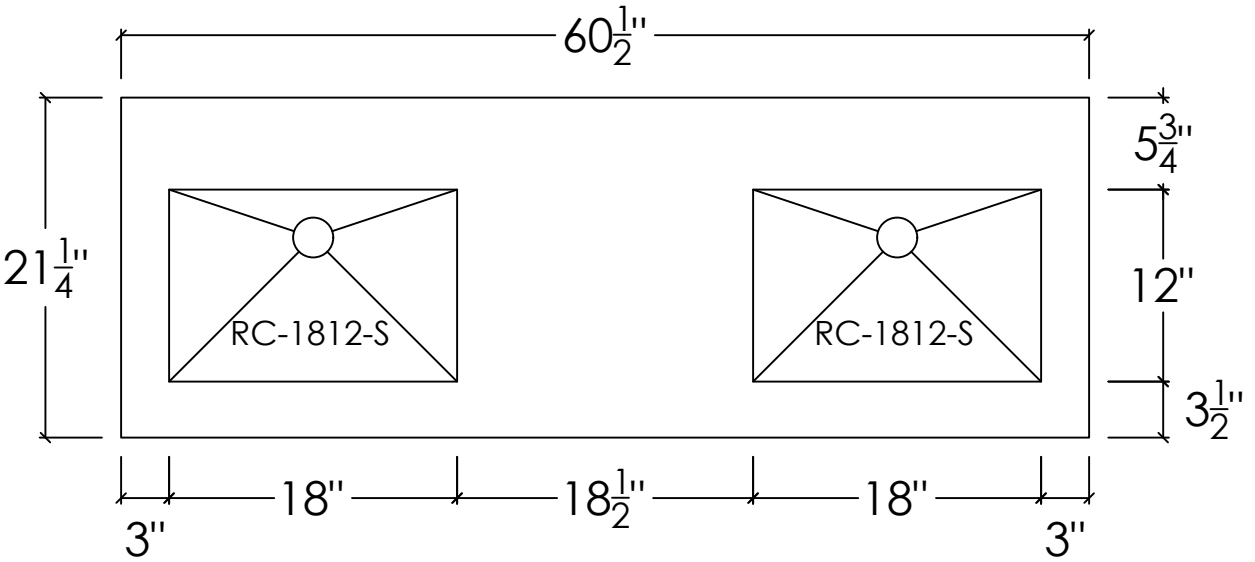
MAD-60V-DBL



FRONT ELEVATION



MAD-60N-DBL



RIGHT SECTION

