

FORUM CONCRETE TABLE

INSTALLATION INSTRUCTIONS

SKU: TBL-FORUM-DIN

Thank you for choosing Trueform Concrete.

FORUM is a minimalist concrete table designed to make a statement in your home.



This table is shipped in separate pieces in order to prevent damage from transit. Light assembly is therefore required. These pieces are heavy, so assembly will require at least two people.

For the best results, **please read these instructions in their entirety** to understand the complete process before you begin.

Hardware Provided

16 stainless steel panhead screws, 3/4" long



Items Required

- Power drill
- Phillips-Head bit
- Phillips-Head screwdriver
- Measuring Tape

Positioning the legs

Place the legs in their intended final locations with the mounting brackets facing up. Ensure the legs are spaced the appropriate distance apart and in line with each other. The chart on the right indicates the distance between legs based on table size.

If you purchased a **custom-sized** FORUM, follow the same directions while referring to the overhang dimensions provided in your technical drawing.

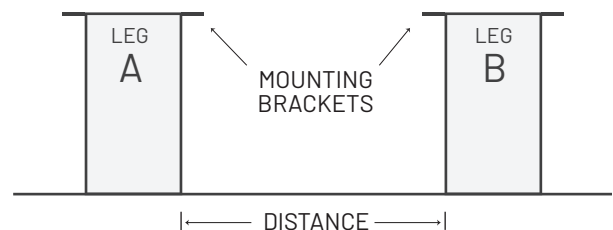


TABLE SIZE	DISTANCE
84" x 44"	24"
95" x 44"	32"
107" x 44"	42"
119" x 44"	42"

FORUM CONCRETE TABLE

INSTALLATION INSTRUCTIONS

SKU: TBL-FORUM-DIN

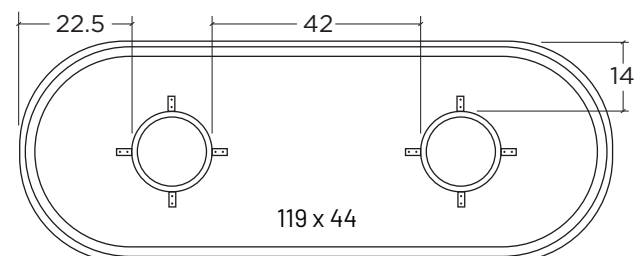
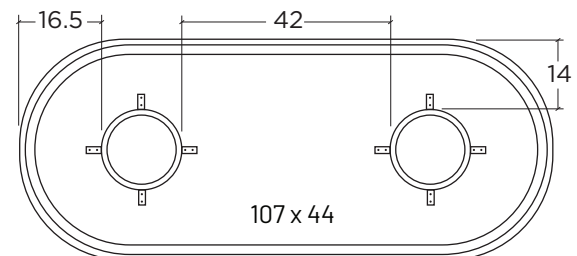
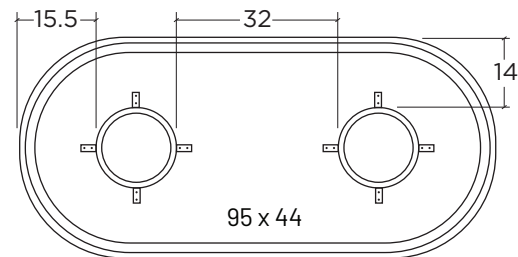
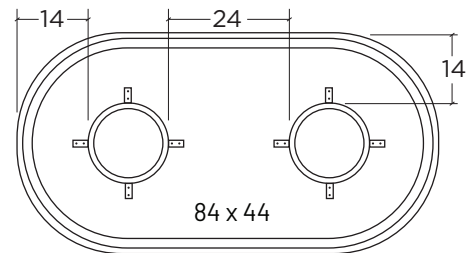
Placing the Top

Place the top on the legs, centering it as well as you can by eye. Once the top is on, make small adjustments by lifting/nudging the top until it is in the correct position using the OVERHANG DIMENSIONS to the right. Verify the overhang is correct on all sides using a measuring tape.

Using a power drill with a Phillips-Head bit, drives screws through each of the 8 mounting brackets and into the wooden subdeck. You may wish to tighten with a Phillips-head screwdriver to avoid stripping the pilot hole.

Note: If the table needs to be moved at any point, it is strongly advised to detach the table top and move the pieces separately.

OVERHANG DIMENSIONS



That should do it! We hope you enjoy your FORUM Table. If you have any questions or need assistance, feel free to reach us at 888-474-7977 or at info@trueformconcrete.com.